

1

2

3

4

5

6

A

B

C

D

E

LEGEND - DEMO CEILINGS

- EXISTING CEILING SYSTEM TO REMAIN. PROTECT FROM DAMAGE DURING CONSTRUCTION.
- EXISTING GYPSUM BOARD CEILING TO REMAIN. PROTECT FROM DAMAGE DURING CONSTRUCTION.
- REMOVE EXISTING ACOUSTICAL CEILING TILE AND ALL ASSOCIATED ITEMS. COORDINATE WITH NEW CONSTRUCTION SCOPE OF WORK. RELOCATE MECHANICAL AND ELECTRICAL ITEMS AS REQUIRED TO ACCOMMODATE NEW CONSTRUCTION.
- REMOVE EXISTING GYPSUM WALL BOARD CEILING AND ALL ASSOCIATED ITEMS. COORDINATE WITH NEW CONSTRUCTION SCOPE OF WORK. RELOCATE MECHANICAL AND ELECTRICAL ITEMS AS REQUIRED TO ACCOMMODATE NEW CONSTRUCTION.
- EXISTING LIGHTING FIXTURES TO REMAIN. COORDINATE WITH ELECTRICAL DRAWINGS.
- EXISTING MECHANICAL FIXTURES TO REMAIN. COORDINATE WITH MECHANICAL DRAWINGS.
- REMOVE EXISTING LIGHTING FIXTURES. COORDINATE WITH ELECTRICAL DRAWINGS.
- REMOVE EXISTING MECHANICAL FIXTURES. COORDINATE WITH MECHANICAL DRAWINGS.

GENERAL NOTES - DEMO CEILINGS

- UNLESS NOTED OTHERWISE, ALL DIMENSIONS ARE TO THE FACE OF STUDS FOR G/WB WALLS/PARTITIONS.
- UNLESS NOTED OTHERWISE, ALL DIMENSIONS ARE TO FACE OF FINISHED MASONRY FOR CMU.
- SCREENED LINES REPRESENT EXISTING WALLS, DOORS, WINDOWS, ETC TO REMAIN. PROTECT FROM DAMAGE DURING CONSTRUCTION ACTIVITIES.
- FOR DIMENSIONAL EXTENTS OF EXISTING WALL DEMOLITION, CUTTING AND PATCHING, SEE NEW FLOOR PLANS.
- PROTECT FROM DAMAGE ALL EXISTING TO REMAIN CASEWORK, EQUIPMENT, FLOOR FINISHES AND CEILING FINISHES DURING CONSTRUCTION.
- PROTECT FROM DAMAGE DURING DEMOLITION, MOVING AND CONSTRUCTION ALL EXISTING CASEWORK, EQUIPMENT, FURNITURE AND ARTWORK THAT IS TO BE RE-USED.
- SEE MECHANICAL, ELECTRICAL, AND STRUCTURAL DRAWINGS FOR ADDITIONAL DEMOLITION WORK.
- COORDINATE THE DEMOLITION OF EXISTING CEILING WITH NEW PLANS, REFLECTED CEILING PLANS AND ROOM FINISH SCHEDULE.
- VERIFY ALL AS-BUILT CONDITIONS PRIOR TO DEMOLITION.
- COORDINATE REMOVAL OF EXISTING SYSTEMS, PATCH, AND REPAIR WITH NEW CONSTRUCTION SCOPE OF WORK.
- RELOCATE MECHANICAL AND ELECTRICAL SYSTEMS AS REQUIRED TO ACCOMMODATE NEW CONSTRUCTION.
- BOTTOM OF ROOF TRUSSES IS A RATED ASSEMBLY. WHERE IMPACTING EXISTING RATED ASSEMBLY, PATCH, AND REPAIR TO PRESERVE RATINGS.

REFERENCE NOTES

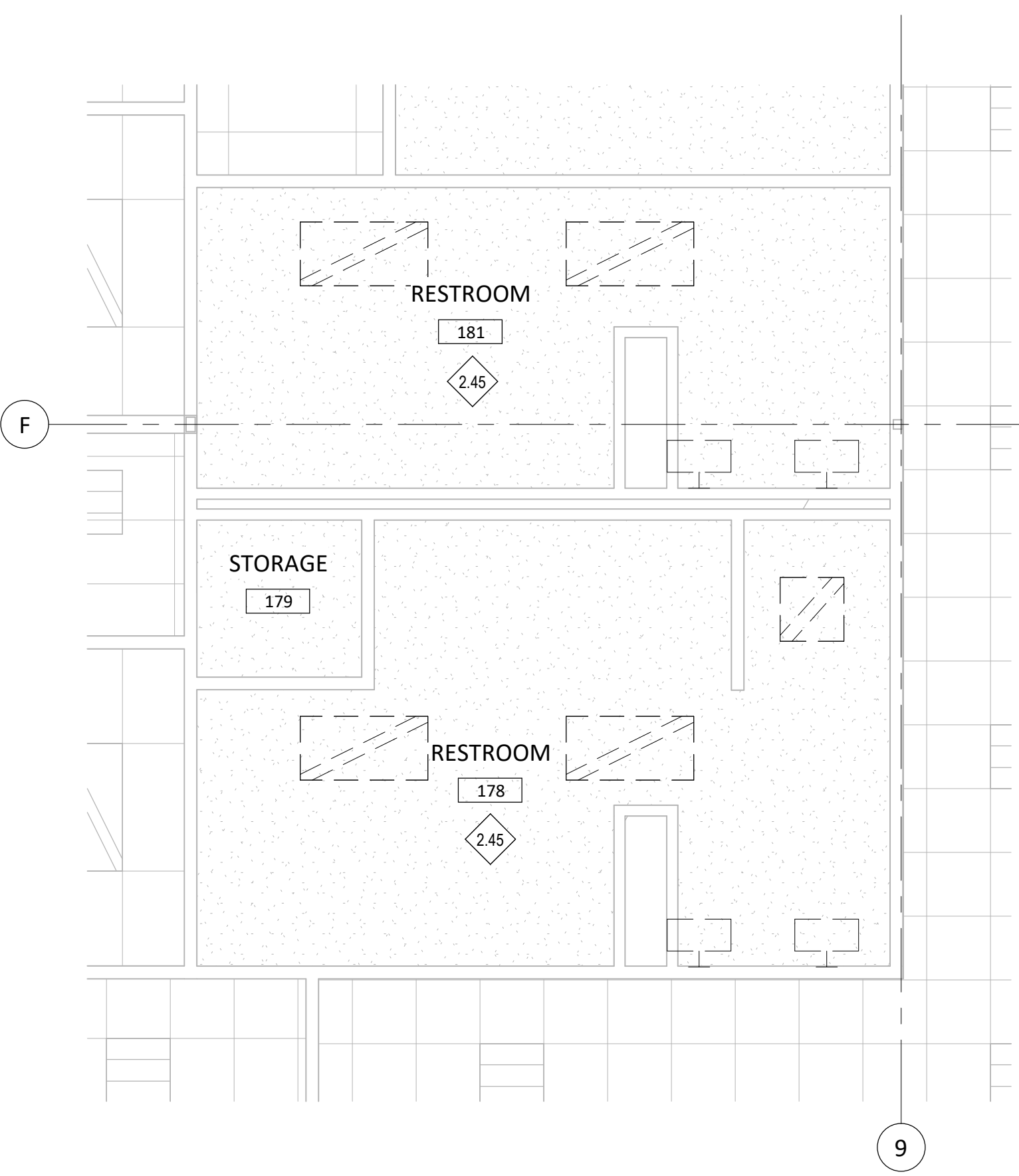
- 2.45 EXISTING CEILING TO REMAIN. LIGHTING FIXTURES TO BE DEMOLISHED REFER TO ELECTRICAL DRAWINGS.
- 23.04 PROVIDE A 12 1/2" ALUMINUM EXHAUST GRILLE. PRICE MODEL 600 WITH 0 DEFLECTION, OR APPROVED EQUAL. BALANCE EXHAUST GRILLE TO 50 CFM. CONNECT GRILLE TO MAIN EXHAUST DUCT SERVING THE RESTROOM WITH 6" ALUMINUM DUCT AND SILICONE SEALANT. SLOPE DUCTWORK DOWN TO EXHAUST GRILLE FROM MAIN DUCT. COORDINATE LOCATION WITH LIGHTING AND FIRE SPRINKLER LOCATIONS.

GENERAL NOTES - CEILINGS

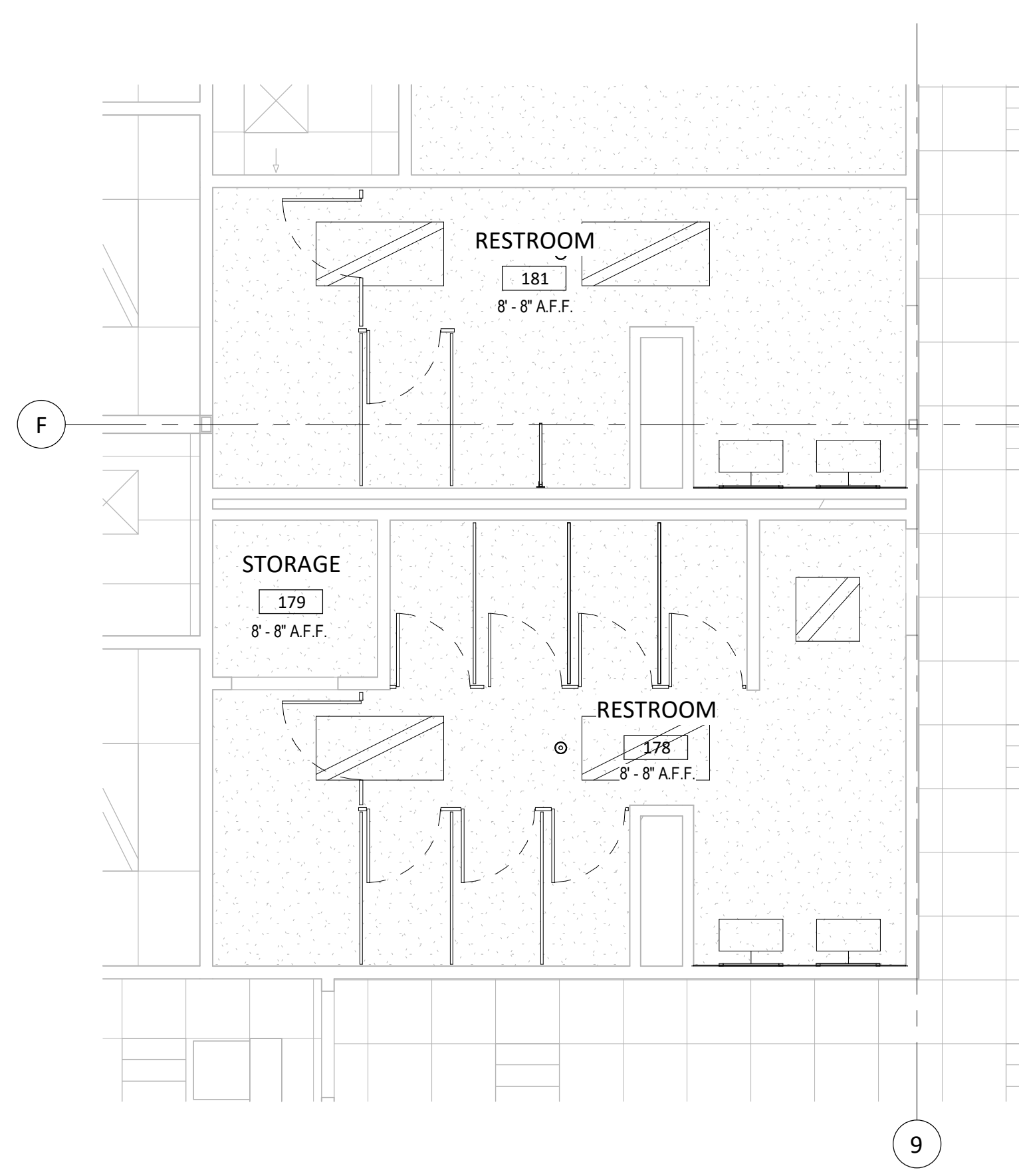
- COORDINATE WITH MECHANICAL AND ELECTRICAL DRAWINGS AND SPECIFICATIONS FOR ADDITIONAL ITEMS TO BE PROVIDED AT THE CEILING PLANE AND IN THE WORK.
- CENTER ALL LIGHT FIXTURES AND SPRINKLER HEADS IN THEIR RESPECTIVE CEILING PANEL.
- INSTALL ALL SUSPENSION SYSTEMS FOR ACOUSTICAL PANEL CEILINGS PER PROVISIONS OF ASTM C 635 AND ASTM C 636.
- ALL SOFFIT DIMENSIONS SHOWN ARE TO FACE OF FINISH.
- COORDINATE WITH MECHANICAL & ELECTRICAL DRAWINGS AND SPECIFICATIONS FOR PHYSICAL SIZES OF ALL CEILING GRILLES, DIFFUSERS, FIXTURES, CANS, AND ALL RELATED ITEMS.
- SUSPENSION SYSTEMS FOR GYPSUM BOARD CEILINGS SHALL BE INSTALLED PER THE SPECIFICATIONS AND ASTM C754.

LEGEND - CEILINGS

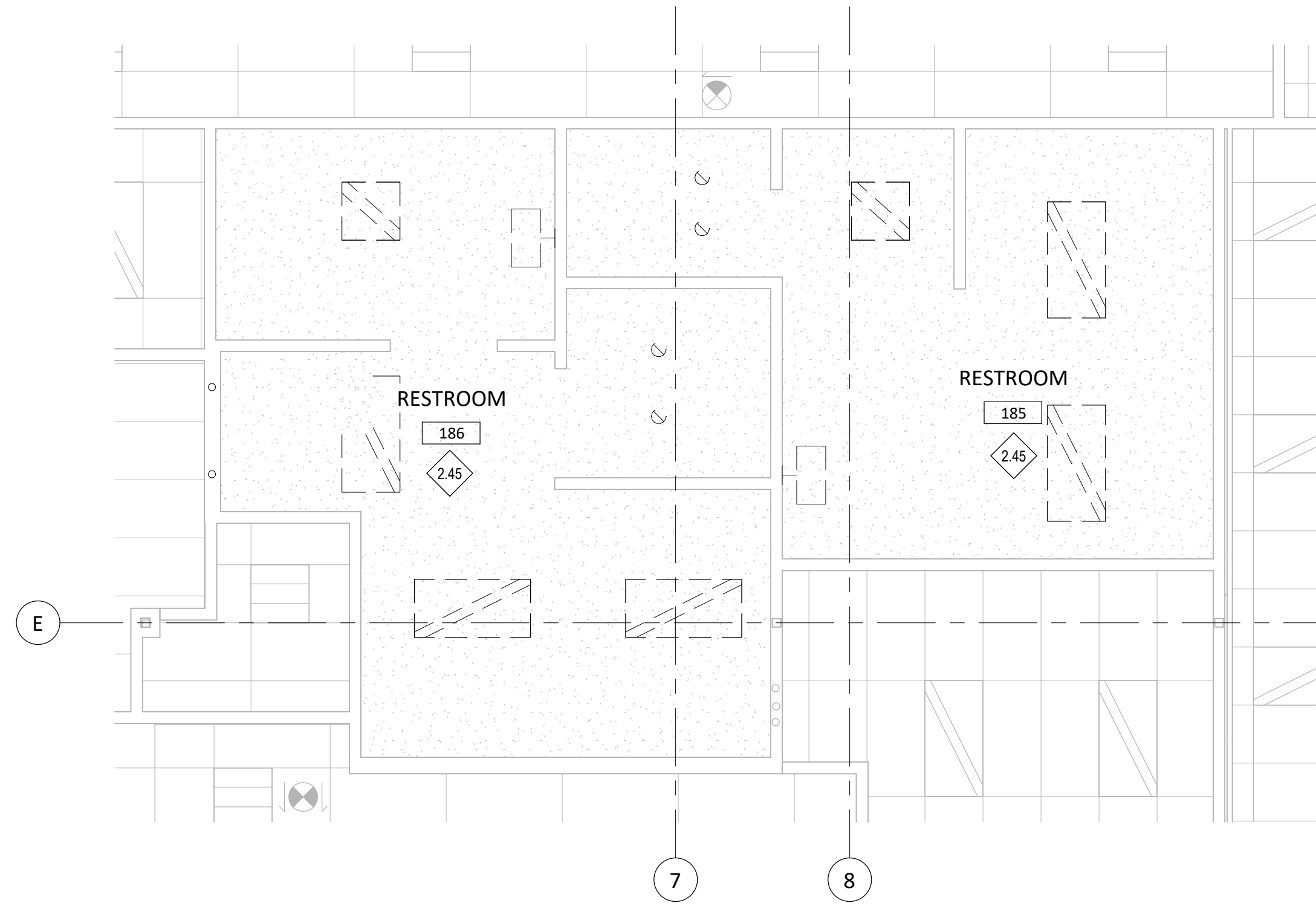
- 2' x 4' ACOUSTICAL CEILING METAL SUSPENSION SYSTEM WITH ACOUSTICAL PANEL CEILING UNITS. RE: SPECIFICATION SECTION 095100- ACOUSTICAL CEILINGS.
- EXISTING TO REMAIN 2' x 4' ACOUSTICAL CEILING.
- 2' x 2' ACOUSTICAL CEILING METAL SUSPENSION SYSTEM WITH ACOUSTICAL PANEL CEILING UNITS. RE: SPECIFICATION SECTION 095100- ACOUSTICAL CEILING.
- GYPSUM BOARD CEILING ON STEEL FRAMING AND SUPPORT SYSTEM. RE: INTERIOR FINISH DRAWINGS AND SPECIFICATION SECTION 092116 GYPSUM BOARD ASSEMBLIES.
- EXISTING TO REMAIN GYPSUM BOARD CEILING
- PLASTIC LAMINATE CEILING
- OPEN TO STRUCTURE
- LIGHTING FIXTURES, COORDINATE WITH ELECTRICAL DRAWINGS.
- MECHANICAL FIXTURES, COORDINATE WITH MECHANICAL DRAWINGS.
- CEILING HEIGHT ABOVE FINISH FLOOR
- EXIT SIGNS, COORDINATE WITH ELECTRICAL DRAWINGS



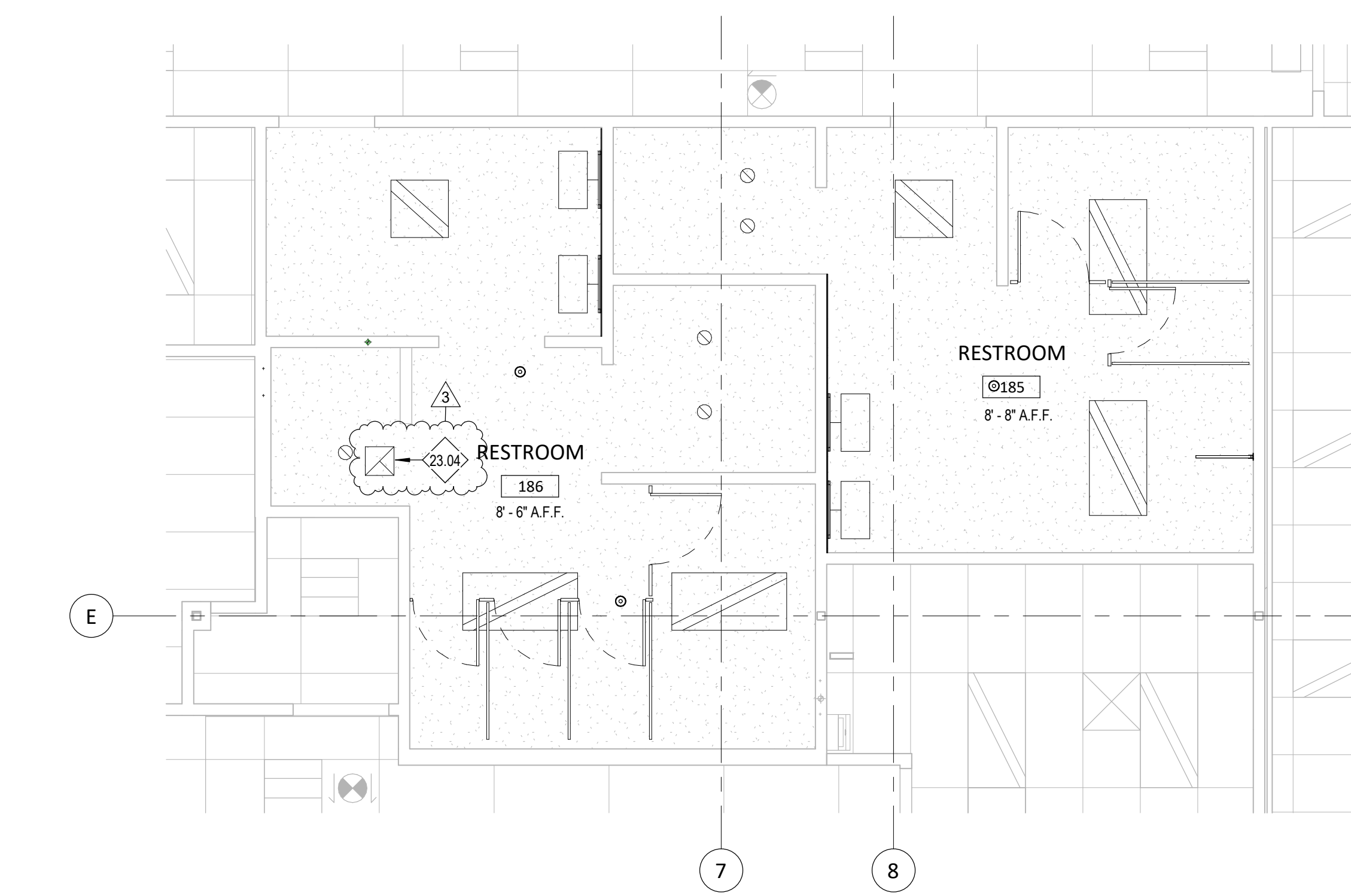
D1 LEVEL 1-ENLARGED DEMO CEILING PLAN RESTROOM 178 & 181
A9.51 1/4" = 1'-0"



D4 LEVEL 1-ENLARGED CEILING PLAN RESTROOM 178 & 181
A9.51 1/4" = 1'-0"

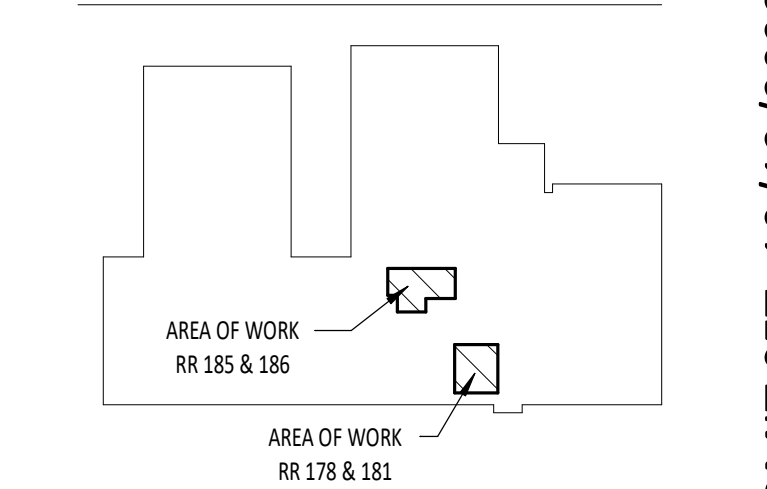


E1 LEVEL 1-ENLARGED DEMO CEILING PLAN RESTROOM 185 & 186
A9.51 1/4" = 1'-0"



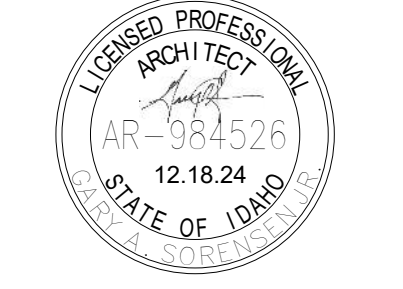
E4 LEVEL 1-ENLARGED CEILING PLAN RESTROOM 185 & 186
A9.51 1/4" = 1'-0"

KEY PLAN



PIVOT NORTH ARCHITECTURE, PLLC.
116 SOUTH 6TH STREET
BOISE, ID 83702
www.pivotnorthdesign.com

STAMP



Project: CDH ARMSTRONG PLACE RENOVATIONS
707 N. ARMSTRONG PLACE, BOISE, IDAHO 83704

Revisions: 3 PRE-BID RFI 12/18/2024

Project No: 22-026
Date: 10/5/2022
Checked By: RS / AF
Drawn By: OH

Sheet Name: LEVEL-ENLARGED CEILING PLAN - RESTROOMS

Sheet No: A9.51

PERMIT SET: 10/12/2022

12/18/2024 3:27:48 PM